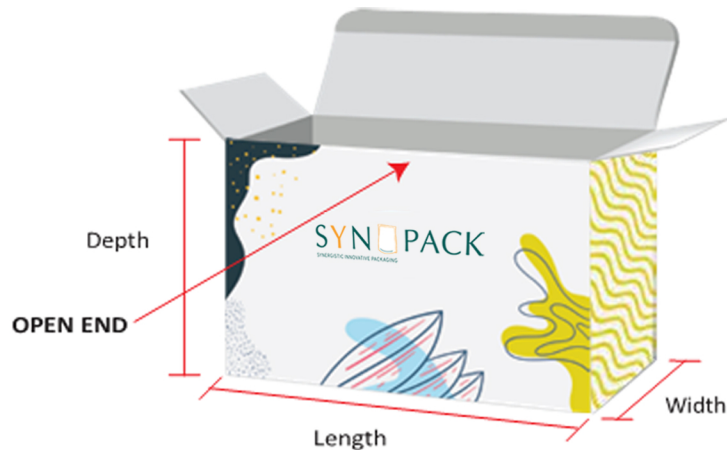


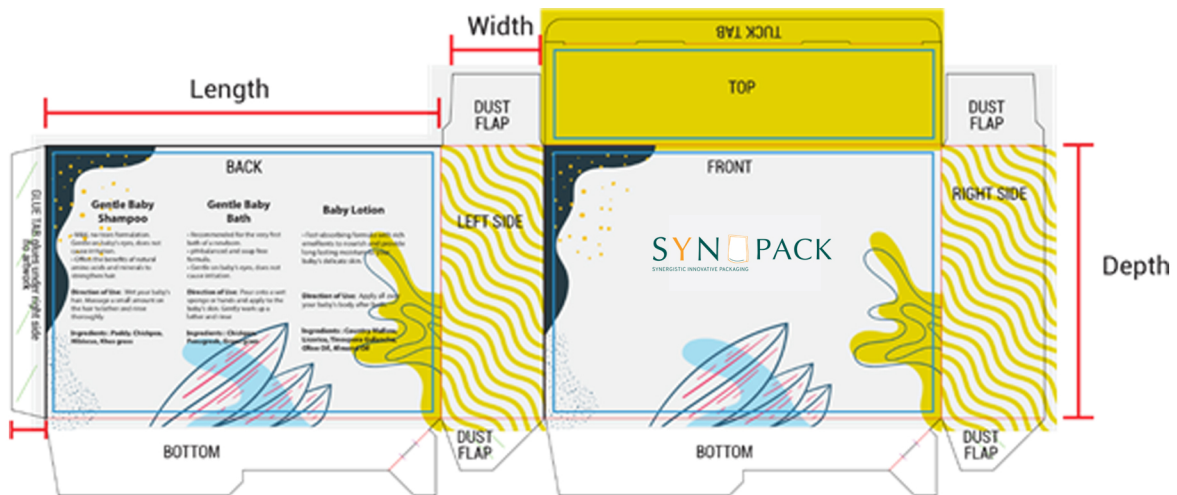
# Measurement Guide

## How to measure box packaging

### Closed Size Measurement



### Opened Size Measurement



#### Size / Measurement Reading:

- 1) Closed Size - Length x Width x Depth (mm)
- 2) Opened Size - Length x Width (mm)

- Length is always the longest side of the box that has a flap.
- Width also has a flap, but this side is shorter than the length.
- Depth relates to the area between the top and bottom scores (creases in the box used to enable folding) that create the height of the box.