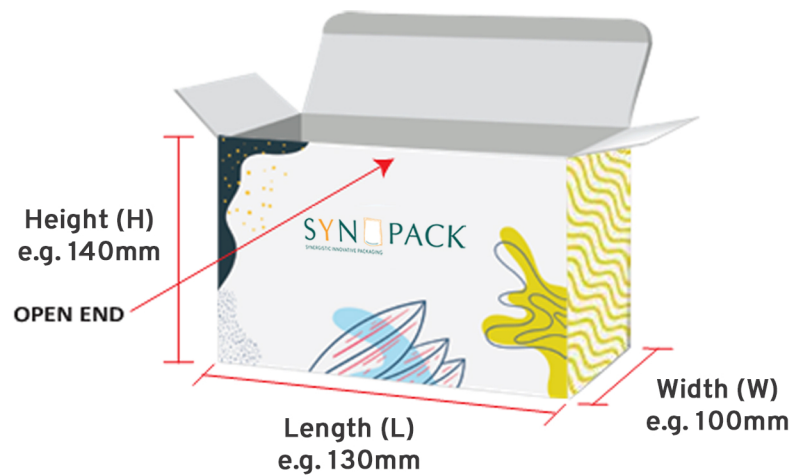


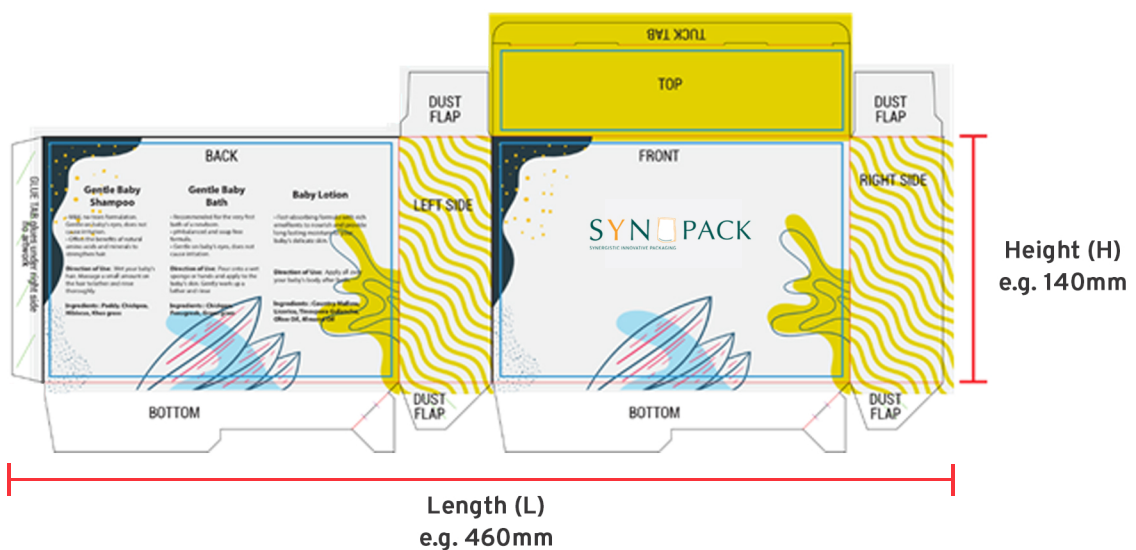
Measurement Guide for Box Packaging

Closed Size Measurement



L (mm) x W (mm) x H (mm)
e.g. 130mm x 100mm x 140mm

Opened Size Measurement



L (mm) x W (mm)
e.g. 460mm x 140mm

- Length is determined by the surface where we read the front of packaging.
- Depth relates to the area between the top and bottom scores (creases in the box used to enable folding) that create the height of the box.